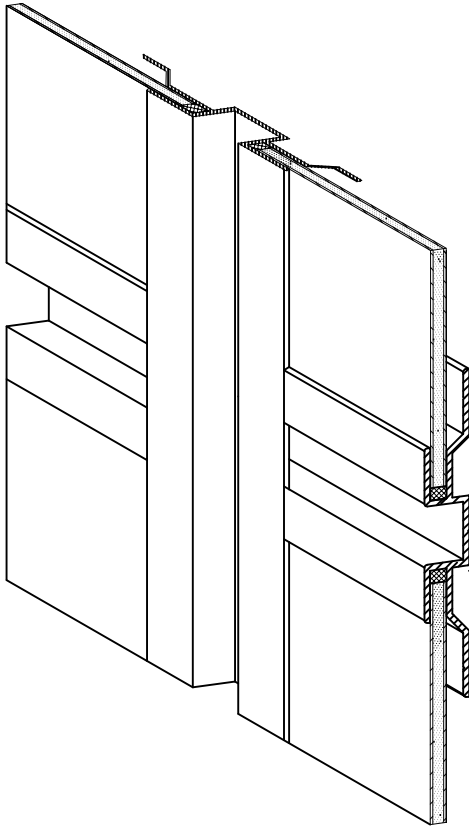


Pacific Panel Systems

P.O. Box 2170
Fairview, Or 97024
office: 503-667-0650
fax: 503-296-2441
info@pacificpanelsystems.com

P-100 EG



FEATURES/BENEFITS

Extruded aluminum Edge Grip molding
painted to match or contrast panel
No exposed fasteners
Little or no maintenance required
20 year paint warranty

P-100 Edge Grip system consist of 4mm solid core composite material with extruded aluminum attachment moldings

PANEL SYSTEM TESTED TO MEET

AAMA 501 Standards include

ASTM E283 Air penetration

ASTM E331 Water penetration

ASTM E330 Structural performance

AAMA 501.4 Seismic movement

4MM COMPOSITE PANELS

Polyethylene or Fire Rated core

Pre-finished or anodized aluminum

Copper

Stainless Steel

Zinc

Other materials upon request

SIZES

Maximum panel size 5' 2" x 16' 4"

Optimum panel widths 62", 31", 20"

Optimum panel lengths 196", 98", 65", 49"

WEIGHT

4mm composite panel with extrusions
attached, average weight of 1.2 psf

LEED

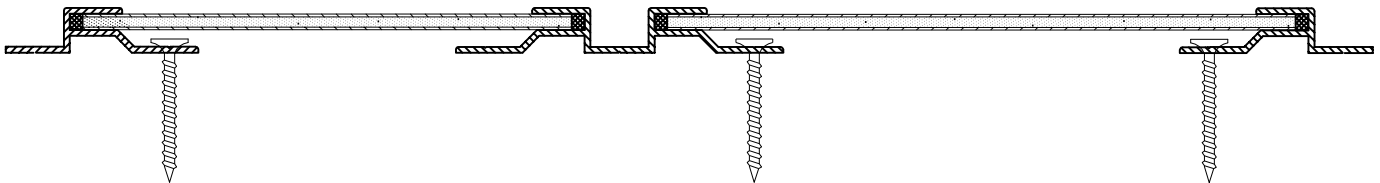
Possibly contribute to the following LEED credits

ID 1.1-1.4- Highly durable or innovative finishes

MR 4- Recycled content

MR 5- Regional manufacturing

NC 2- New Construction Waste Management



Pacific Panel Systems

P.O. Box 2170

Fairview, Or 97024

office: 503-667-0650

fax: 503-296-2441

info@pacificpanelsystems.com

D-A

P-200 PER

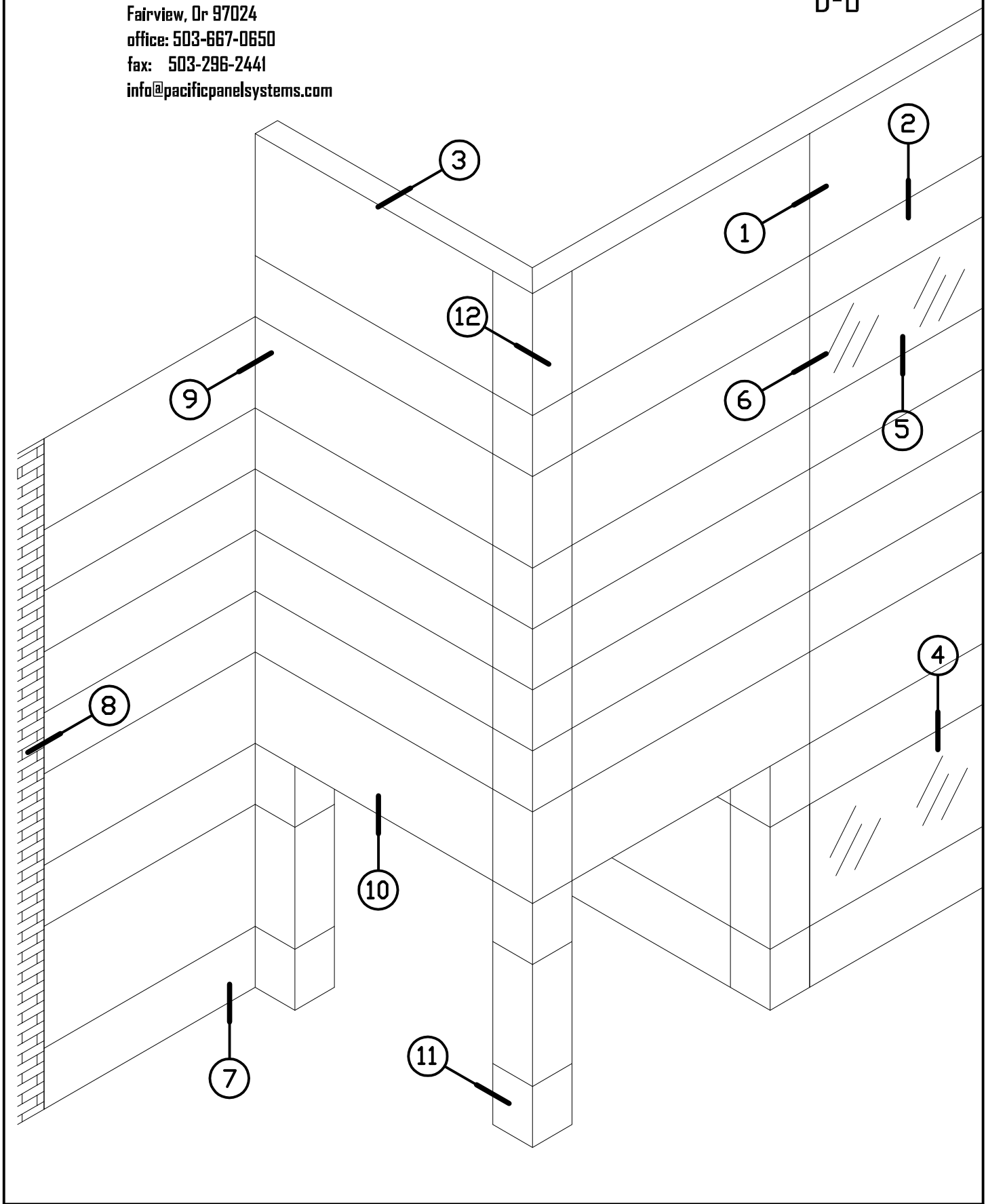
THESE DETAILS ARE FOR BASIC DESIGNS CONCEPTS ONLY

D-A	TABLE OF CONTENTS
D-B	REFERENCE ELEVATION
D-1	TYPICAL VERTICAL JOINT/REVEAL
D-2	TYPICAL HORIZONTAL JOINT/REVEAL
D-3	TYPICAL PARAPET
D-4	TYPICAL WINDOW HEAD
D-5	TYPICAL WINDOW SILL
D-6	TYPICAL WINDOW JAMBS
D-7	TYPICAL BASE
D-8	TYPICAL END WALL
D-9	TYPICAL INSIDE CORNER
D-10	TYPICAL SOFFIT
D-11	TYPICAL RECTANGULAR COLUMN COVER
D-12	TYPICAL OUTSIDE CORNER
D-13	PANEL COMPONENTS

Pacific Panel Systems

P.O. Box 2170
Fairview, Or 97024
office: 503-667-0650
fax: 503-296-2441
info@pacificpanelsystems.com

D-B



Pacific Panel Systems

P.O. Box 2170

Fairview, Or 97024

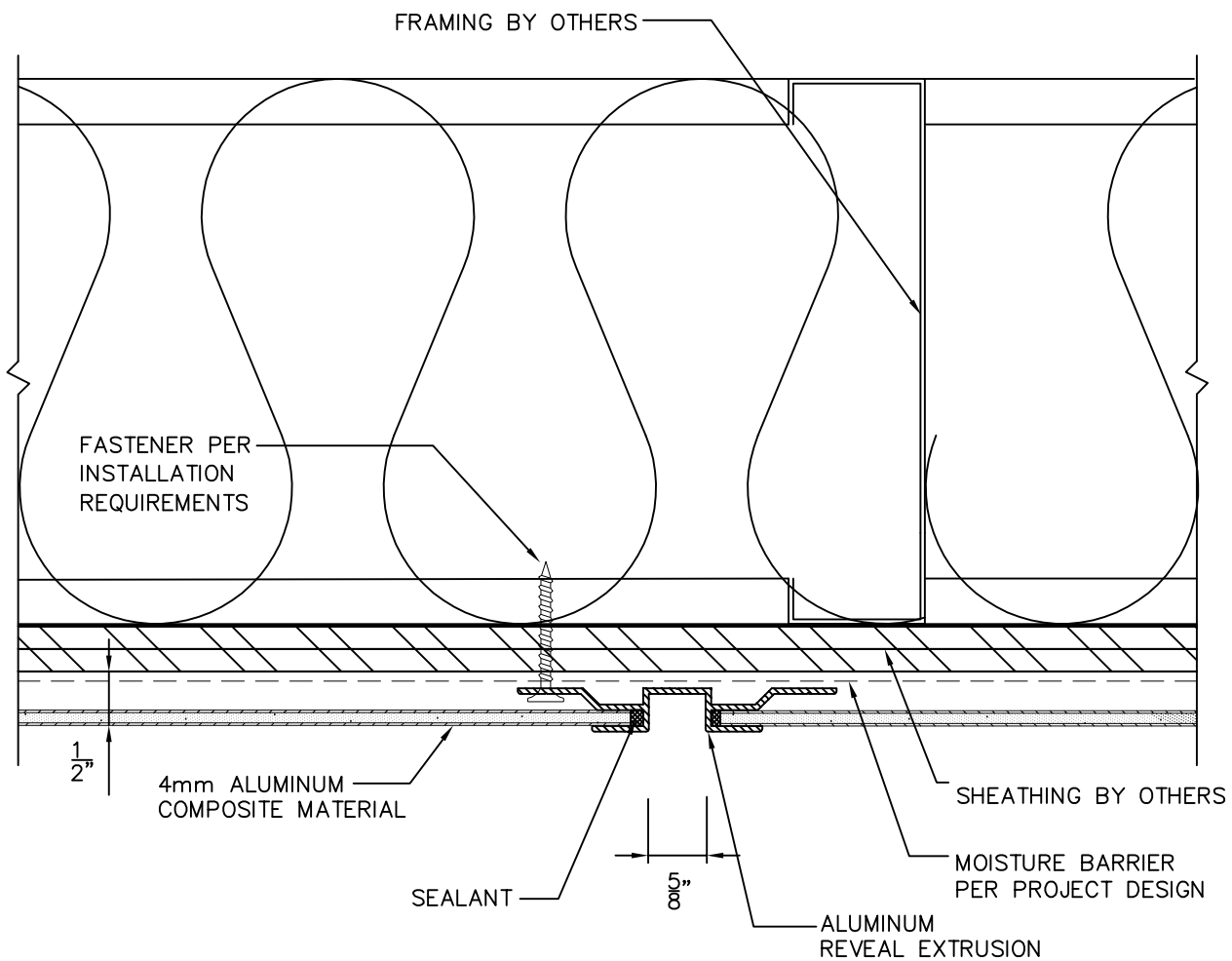
office: 503-667-0650

fax: 503-296-2441

info@pacificpanelsystems.com

D-1

VERTICAL JOINT/REVEAL

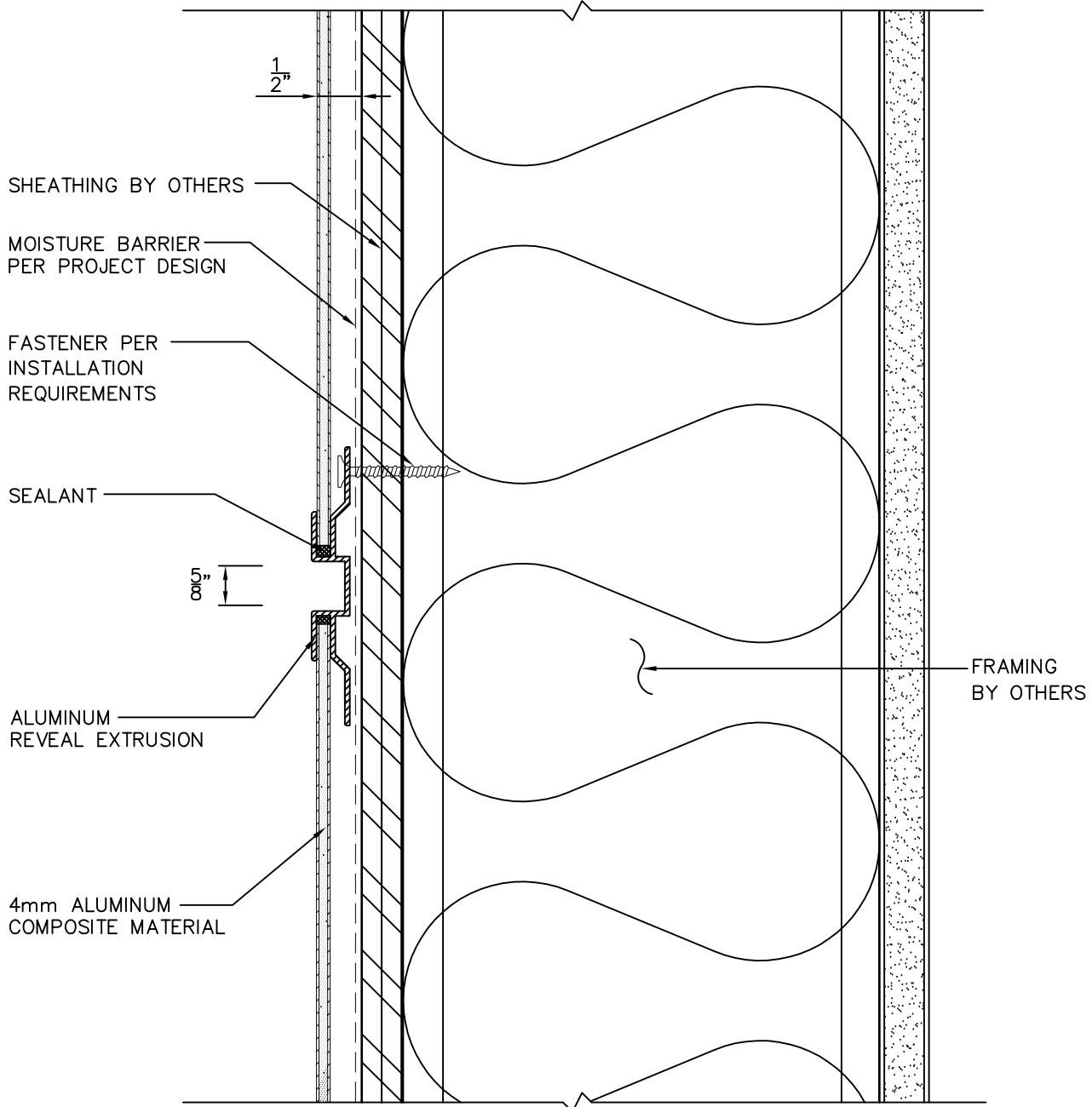


Pacific Panel Systems

P.O. Box 2170
Fairview, Or 97024
office: 503-667-0650
fax: 503-296-2441
info@pacificpanelsystems.com

D-2

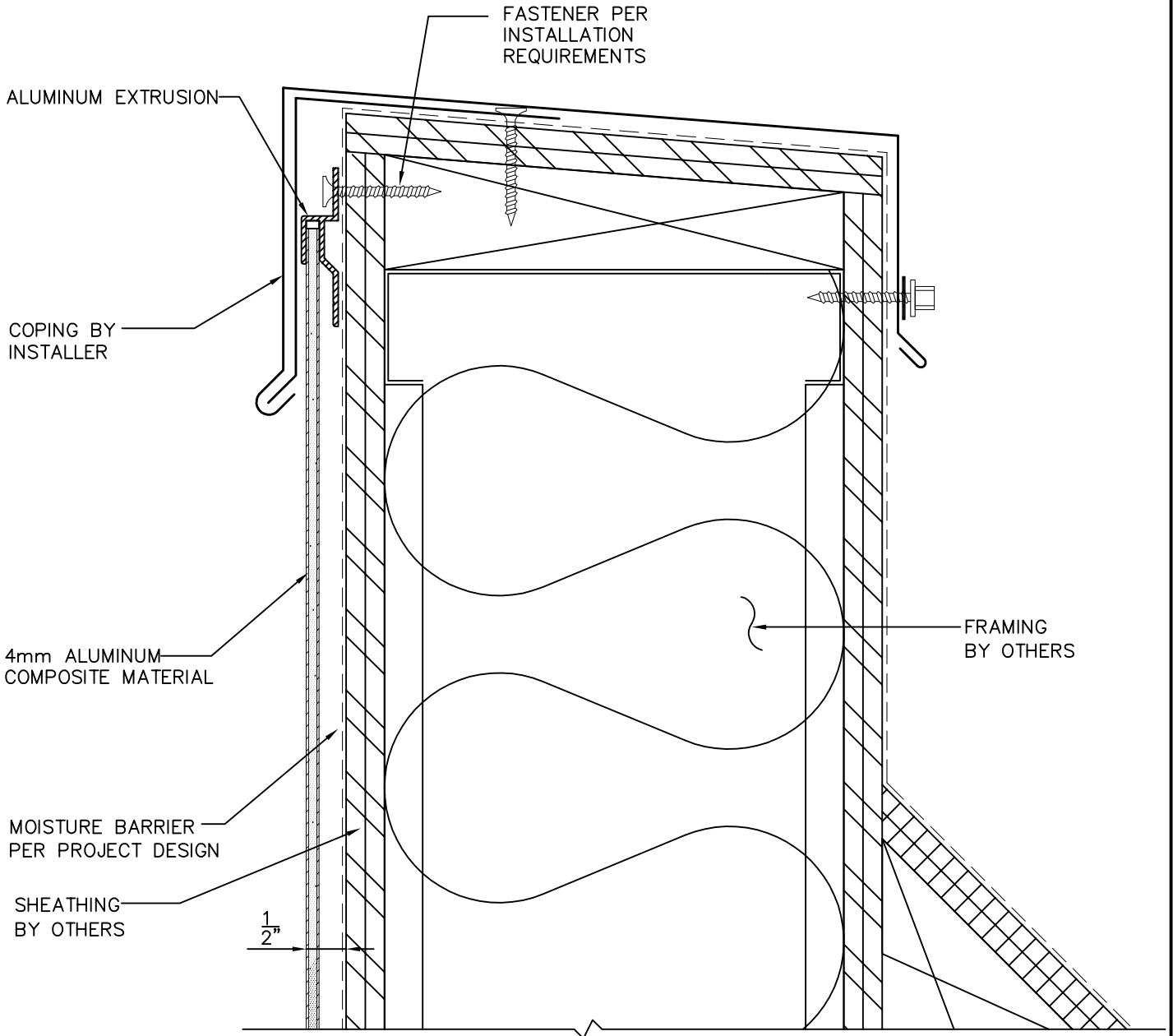
HORIZONTAL JOINT/REVEAL



Pacific Panel Systems

P.O. Box 2170
Fairview, Or 97024
office: 503-667-0650
fax: 503-296-2441
info@pacificpanelsystems.com

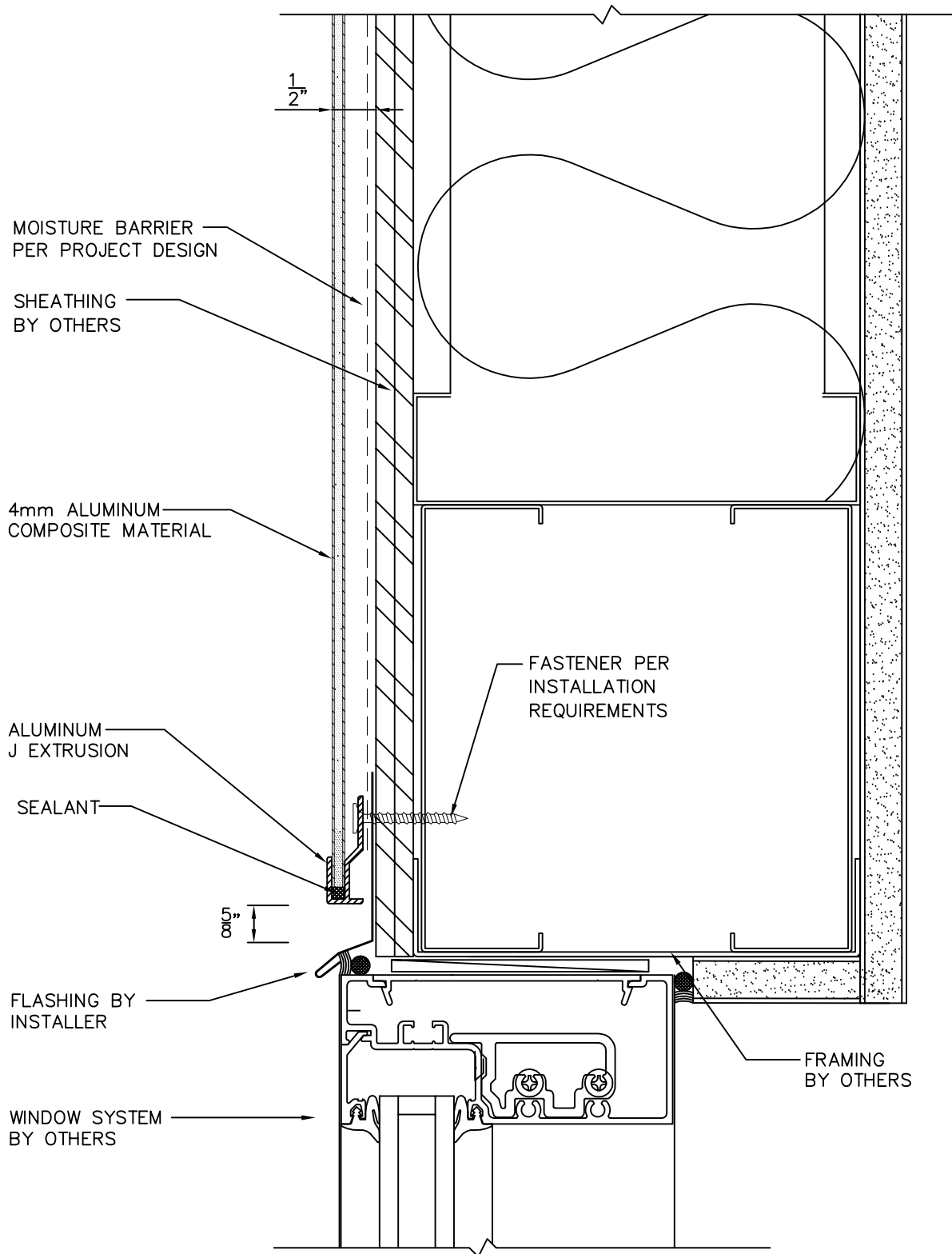
D-3
PARAPET



Pacific Panel Systems

P.O. Box 2170
Fairview, Or 97024
office: 503-667-0650
fax: 503-296-2441
info@pacificpanelsystems.com

D-4
WINDOW HEAD

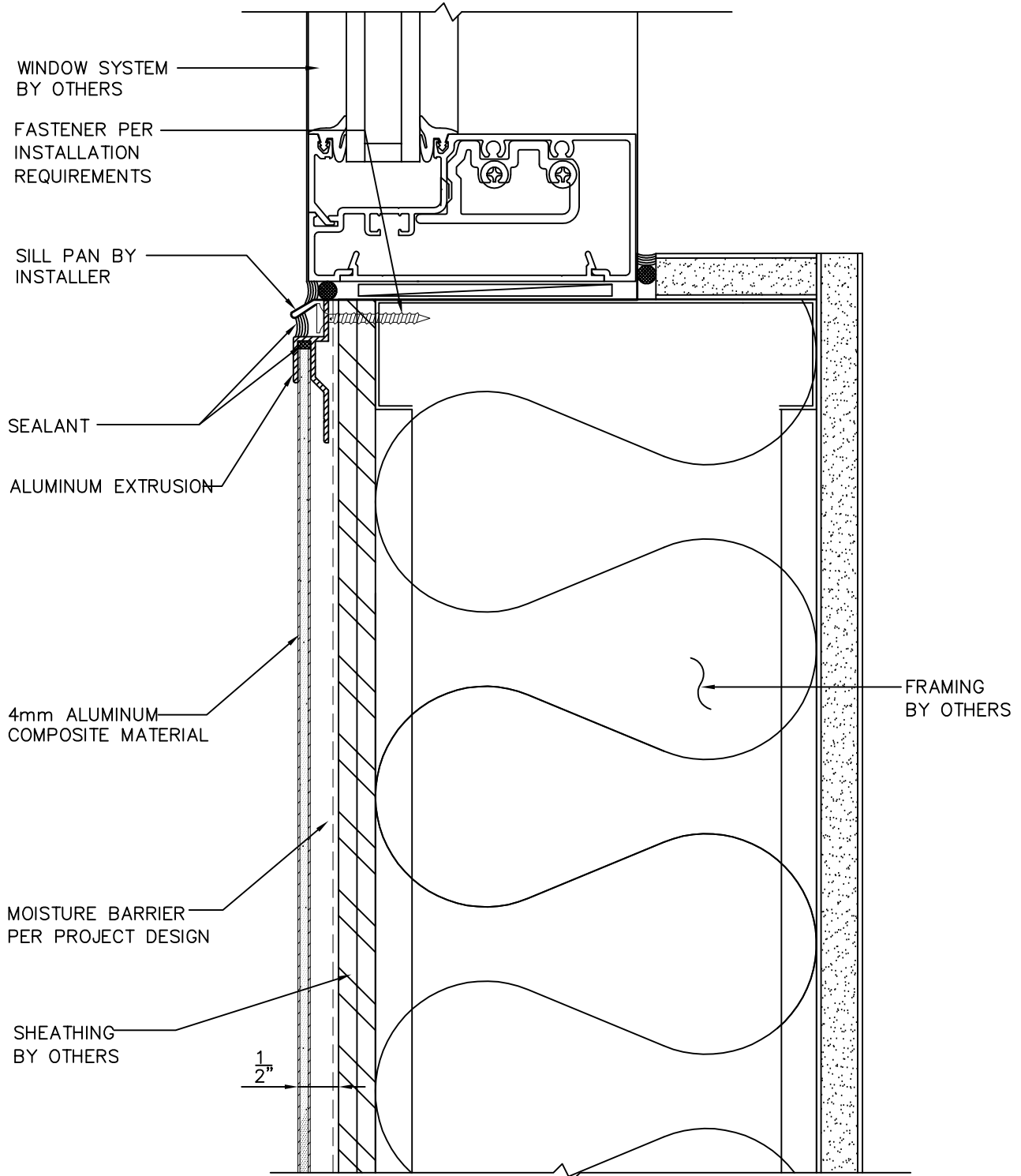


Pacific Panel Systems

P.O. Box 2170
Fairview, Or 97024
office: 503-667-0650
fax: 503-296-2441
info@pacificpanelsystems.com

D-5

WINDOW SILL

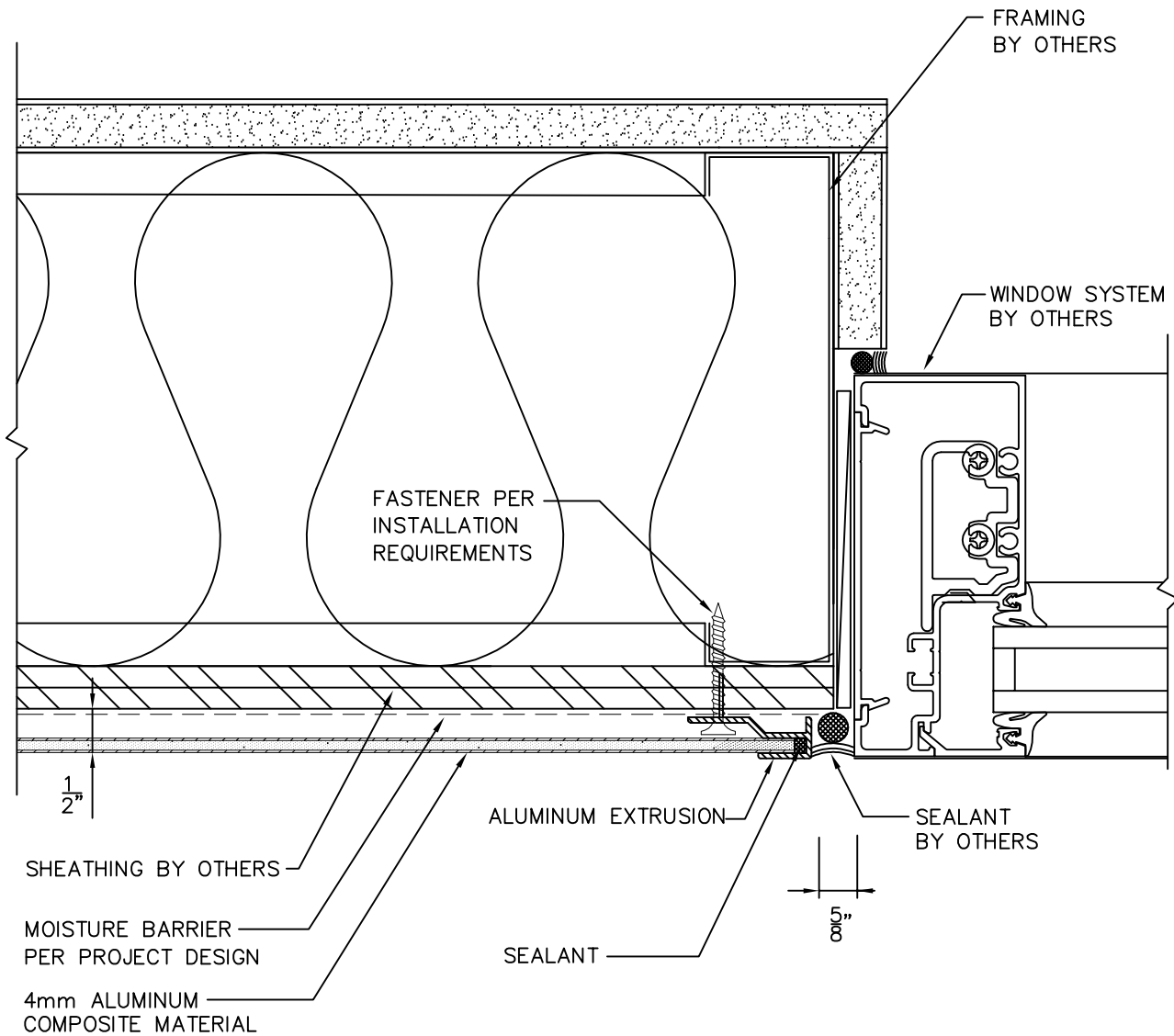


Pacific Panel Systems

P.O. Box 2170
Fairview, Or 97024
office: 503-667-0650
fax: 503-296-2441
info@pacificpanelsystems.com

D-6

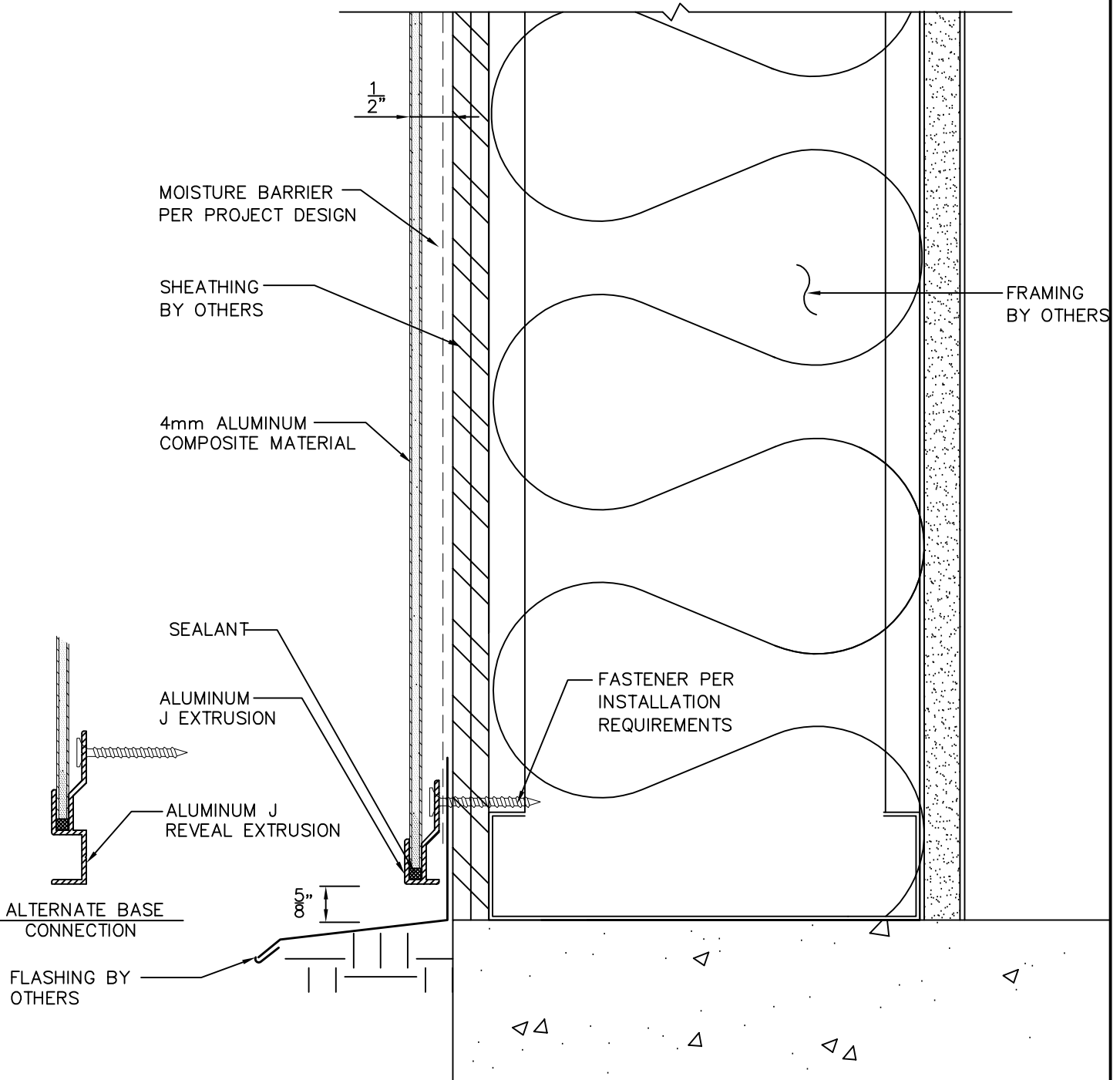
WINDOW JAMB



Pacific Panel Systems

P.O. Box 2170
Fairview, Or 97024
office: 503-667-0650
fax: 503-296-2441
info@pacificpanelsystems.com

D-7
BASE

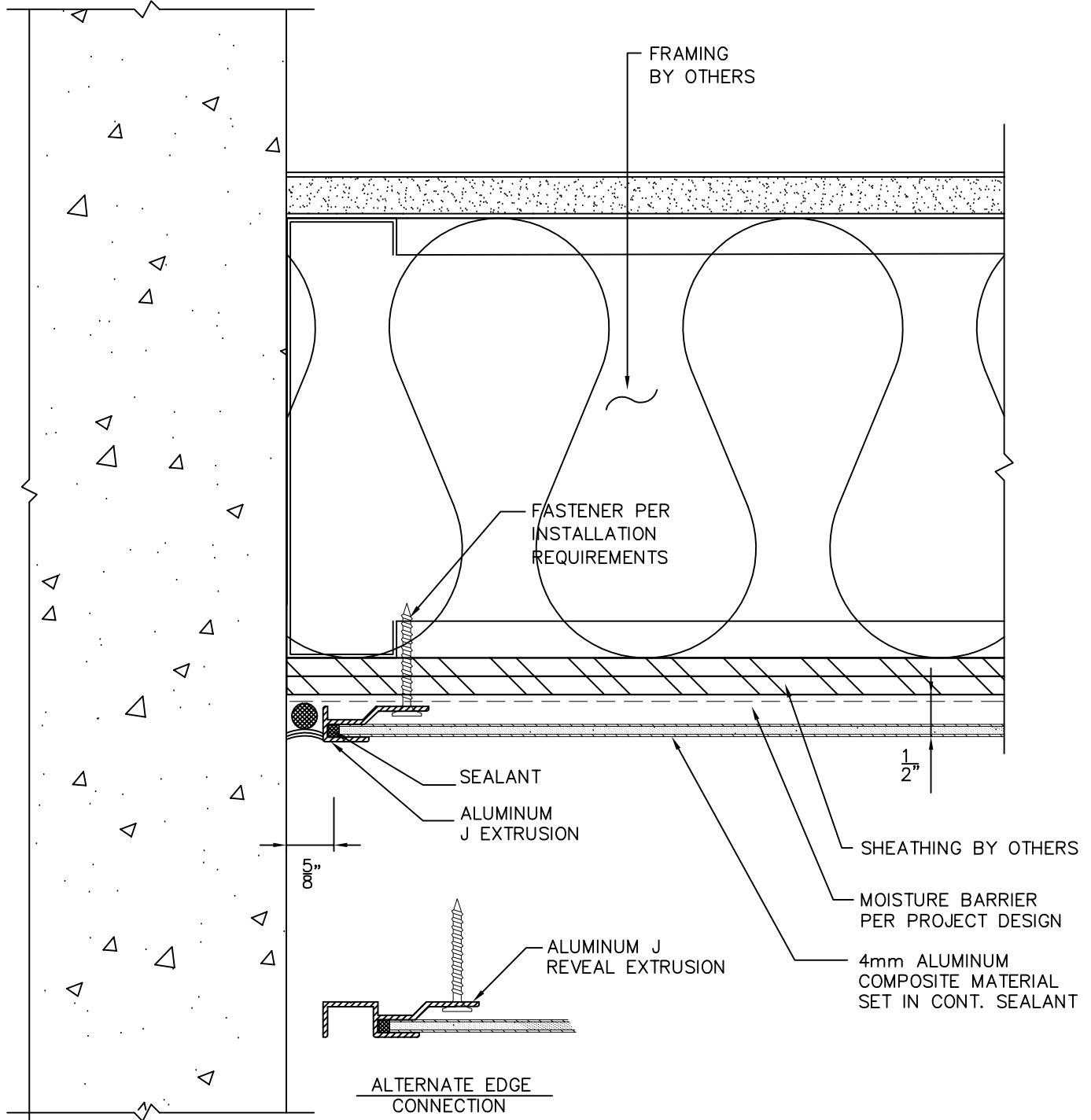


Pacific Panel Systems

P.O. Box 2170
Fairview, Or 97024
office: 503-667-0650
fax: 503-296-2441
info@pacificpanelsystems.com

D-8

END WALL

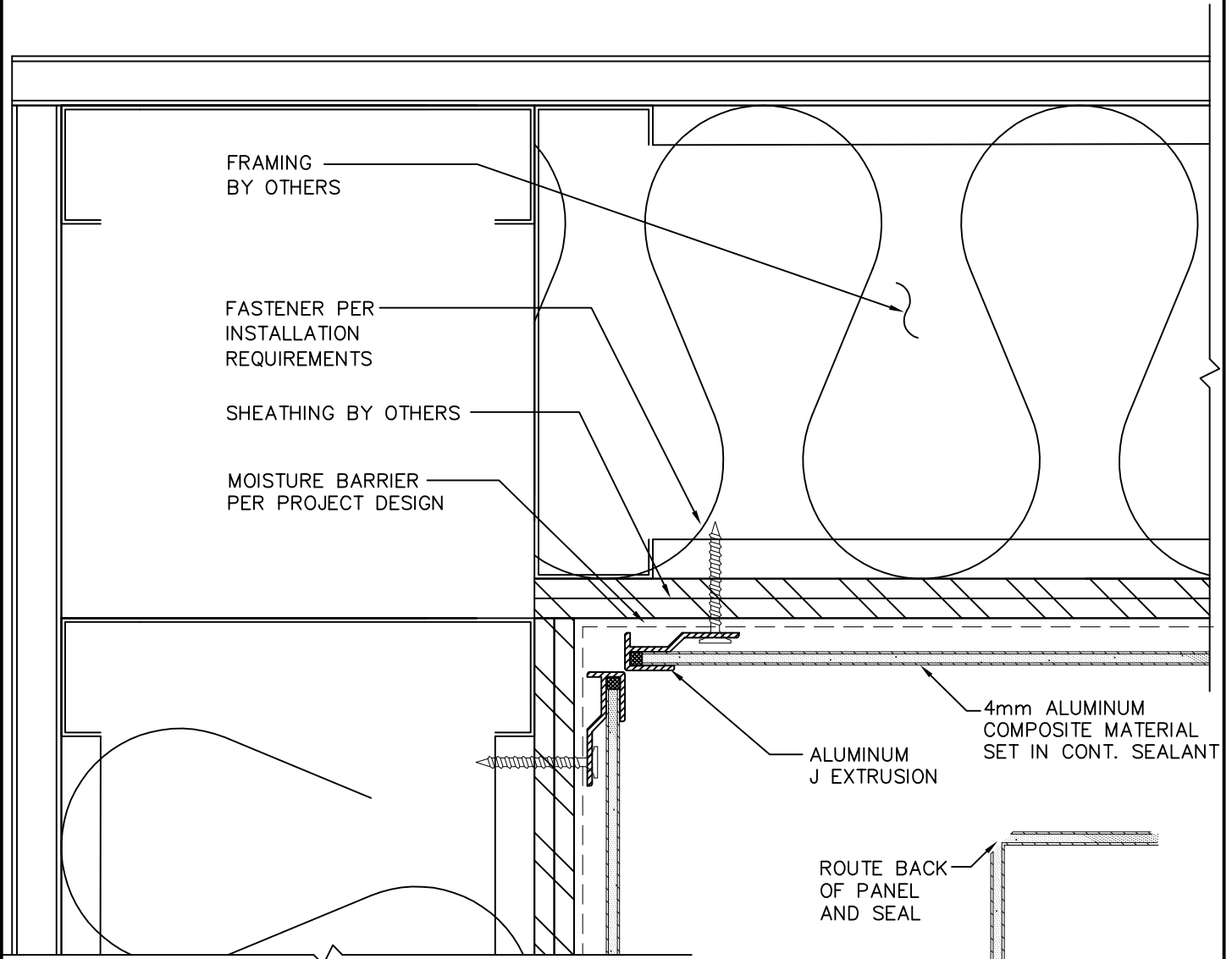


Pacific Panel Systems

P.O. Box 2170
Fairview, Or 97024
office: 503-667-0650
fax: 503-296-2441
info@pacificpanelsystems.com

D-9

INSIDE CORNER

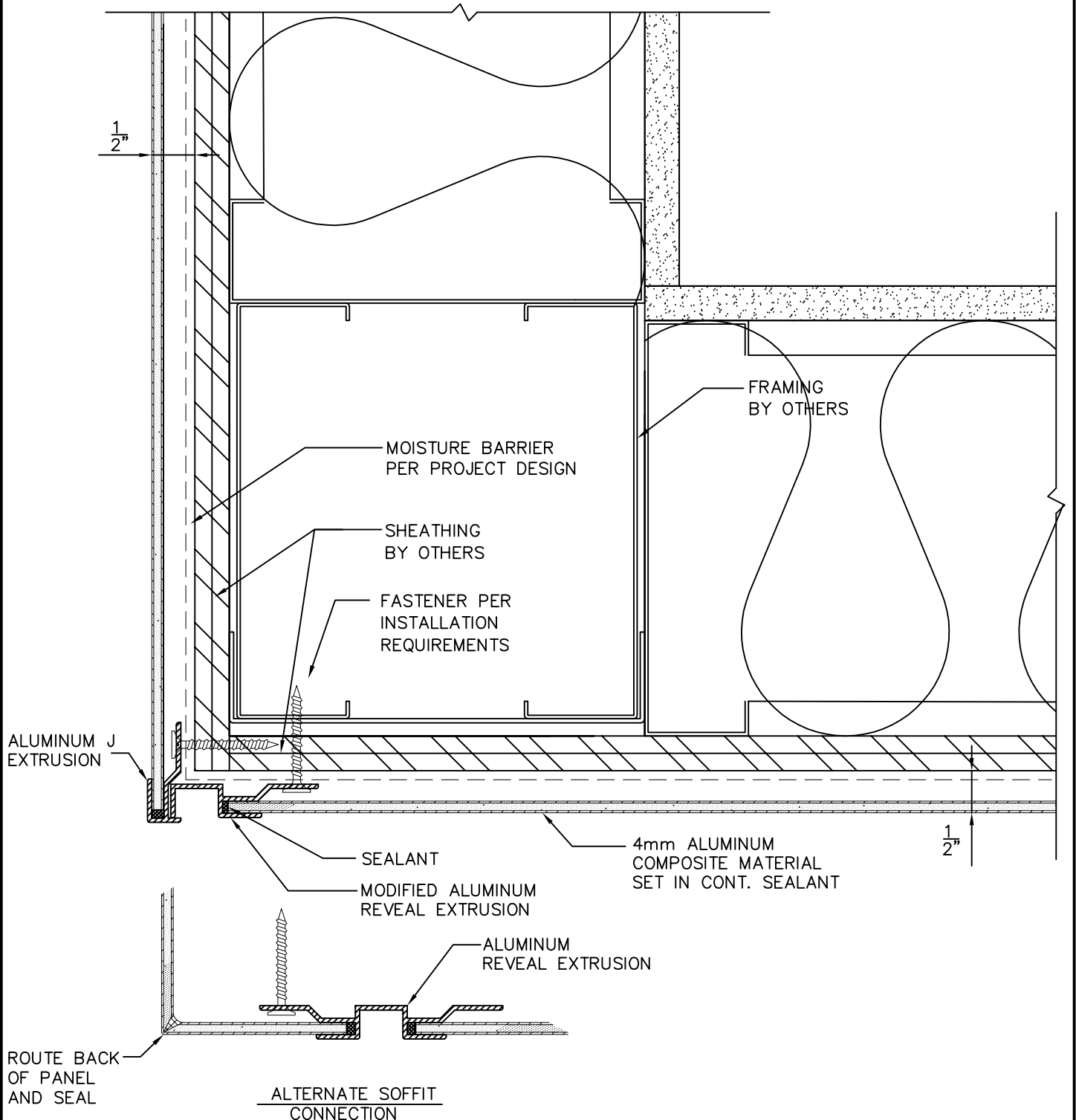


ALTERNATE INSIDE CORNER CONNECTION

Pacific Panel Systems

P.O. Box 2170
Fairview, Or 97024
office: 503-667-0650
fax: 503-296-2441
info@pacificpanelsystems.com

D-10
SOFFIT



Pacific Panel Systems

P.O. Box 2170

Fairview, Or 97024

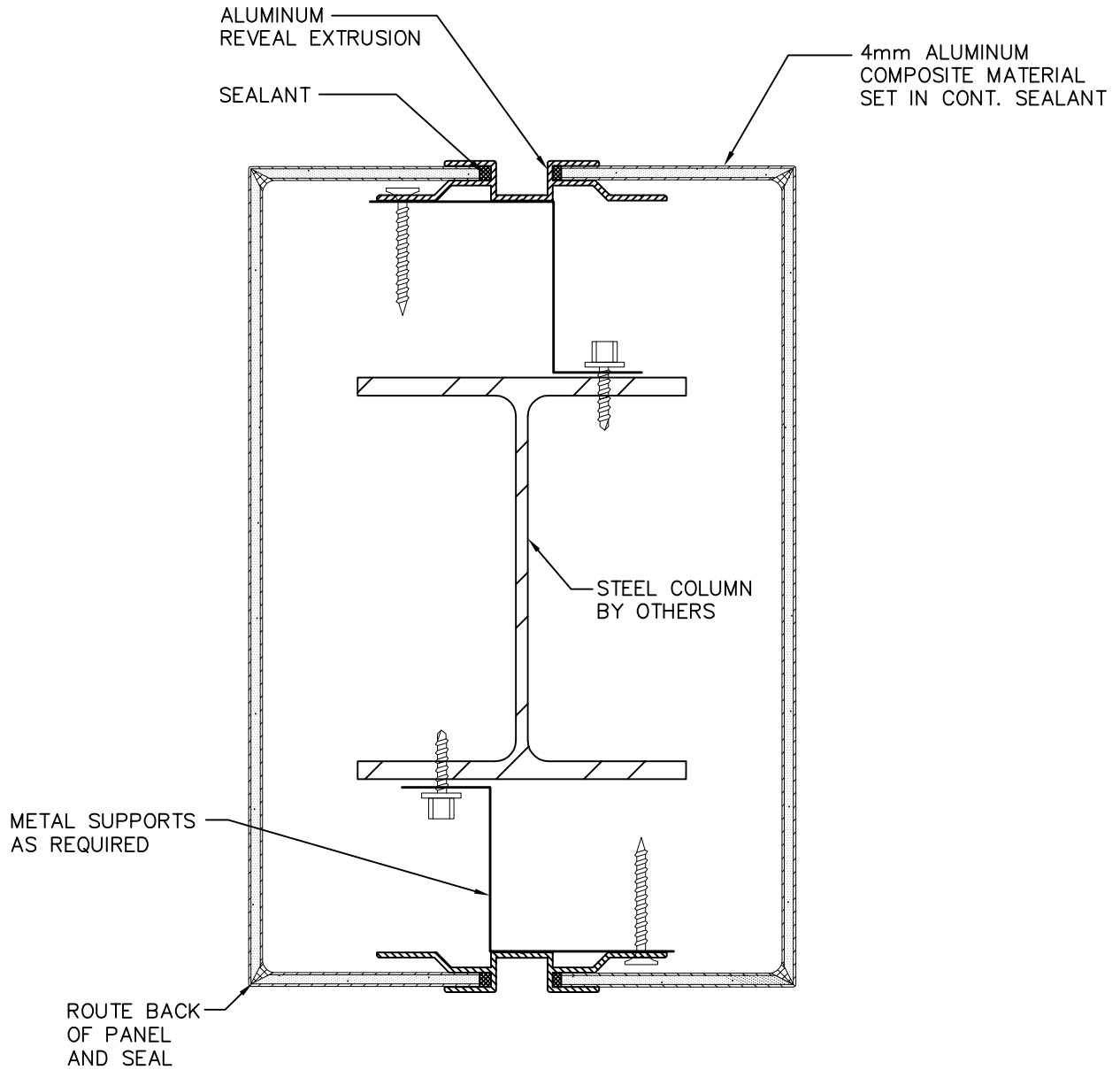
office: 503-667-0650

fax: 503-296-2441

info@pacificpanelsystems.com

D-11

RECTANGULAR COLUMN COVER



Pacific Panel Systems

P.O. Box 2170

Fairview, Or 97024

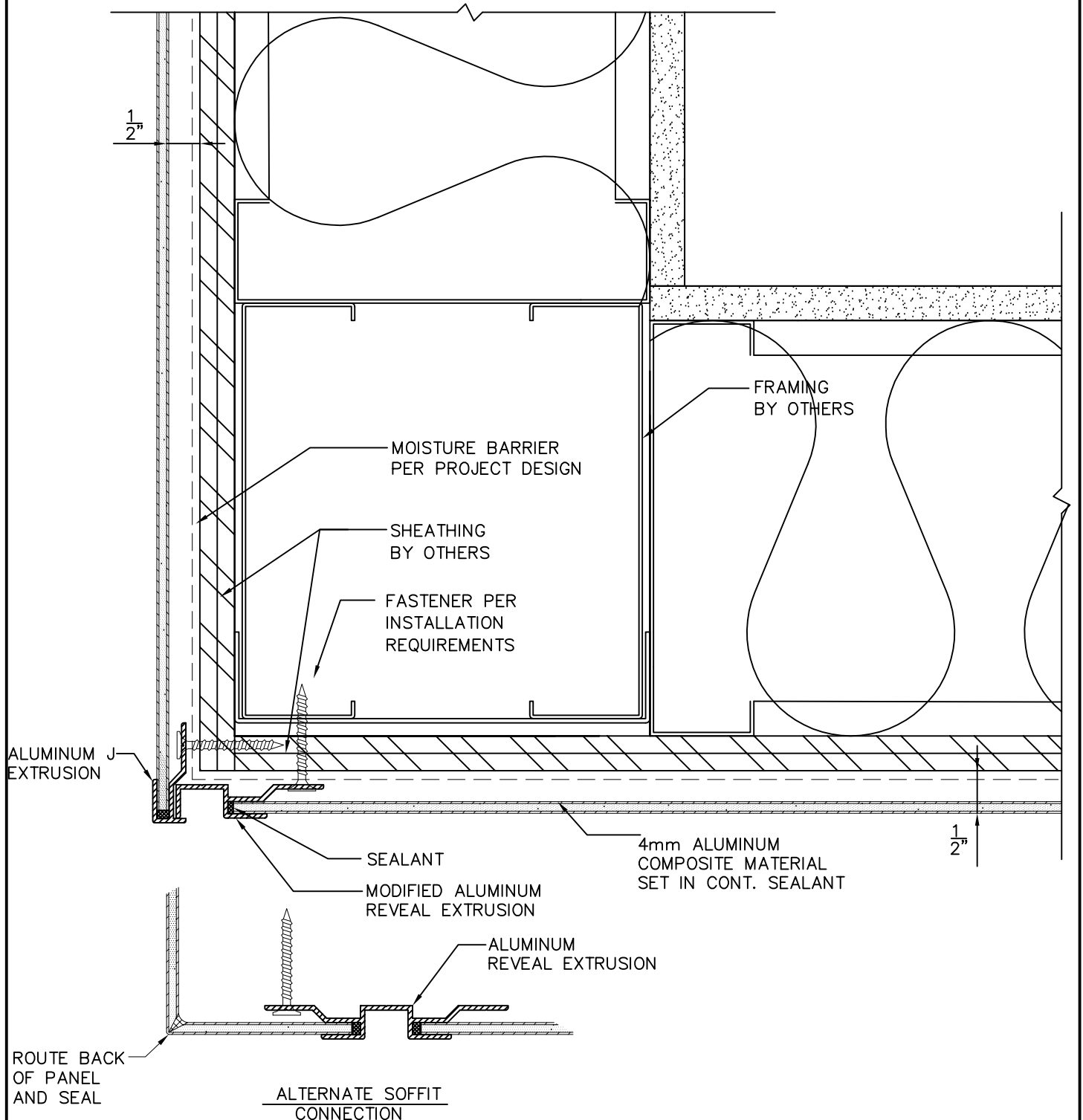
office: 503-667-0650

fax: 503-296-2441

info@pacificpanelsystems.com

D-12

OUTSIDE CORNER



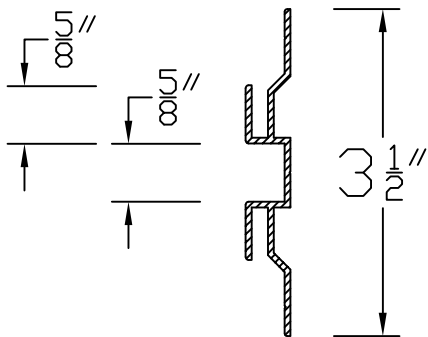
Pacific Panel Systems

P.O. Box 2170
Fairview, Or 97024
office: 503-667-0650
fax: 503-296-2441
info@pacificpanelsystems.com

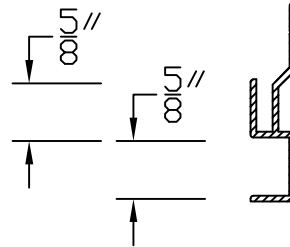
D-13

STANDARD COMPONENTS

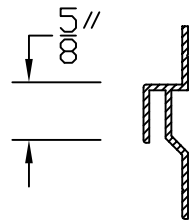
Horizontal reveal extrusions
Material: 6063 Alum



J starter extrusions
Material: 6063 Alum



Panel top extrusion
Material: 6063 Alum



Pacific Panel Systems

P.O. Box 2170

Fairview, Or 97024

office: 503-667-0650

fax: 503-296-2441

info@pacificpanelsystems.com